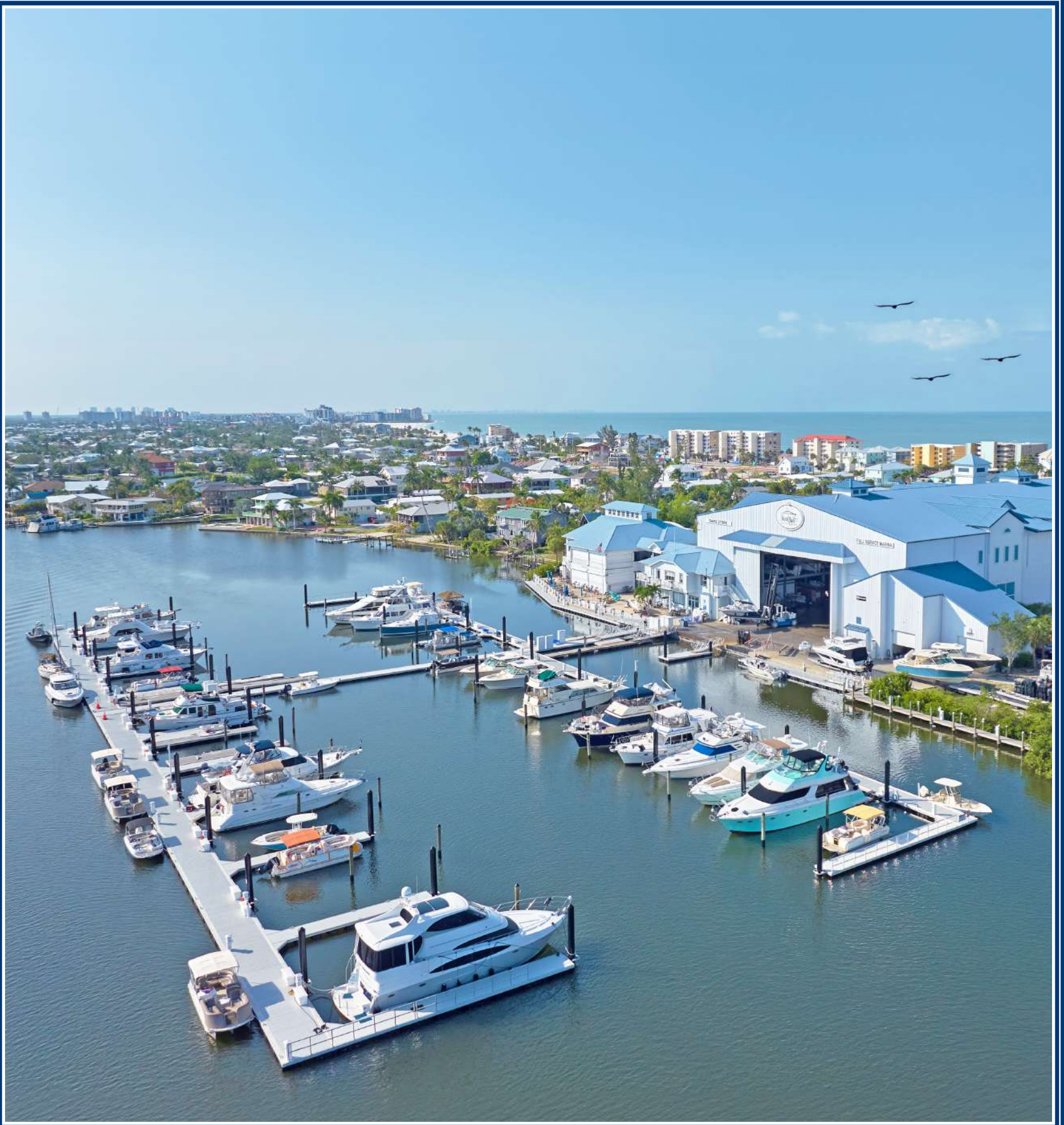


GOLDEN[®]

MARINAS



CONTENTS

FEATURES



4



16



22



26



32



36



37

4
Series 850

16
Series 950

22
Series 9

26
Boat Lift Marinas

32
Gangways

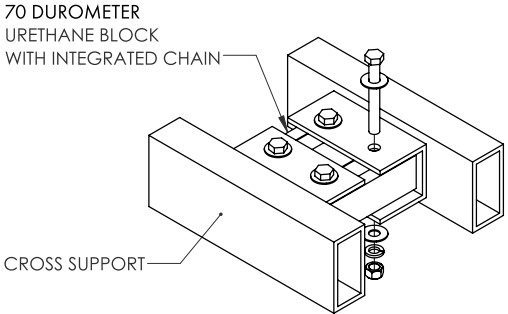
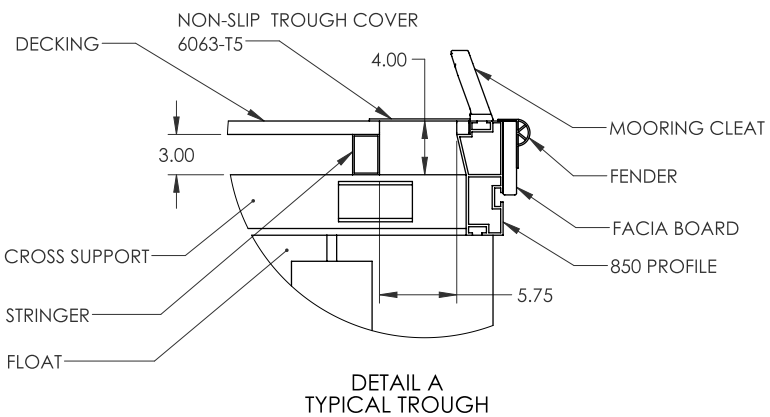
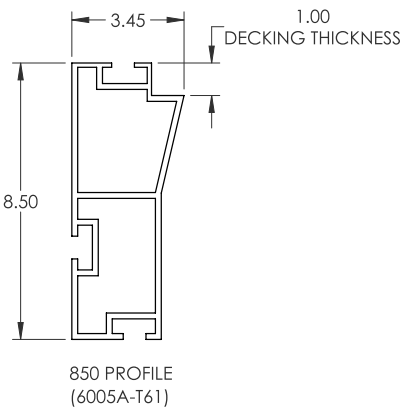
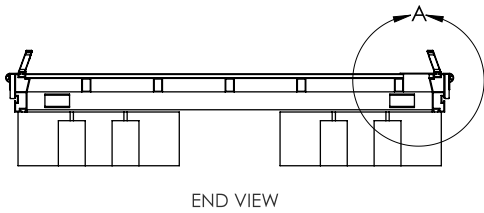
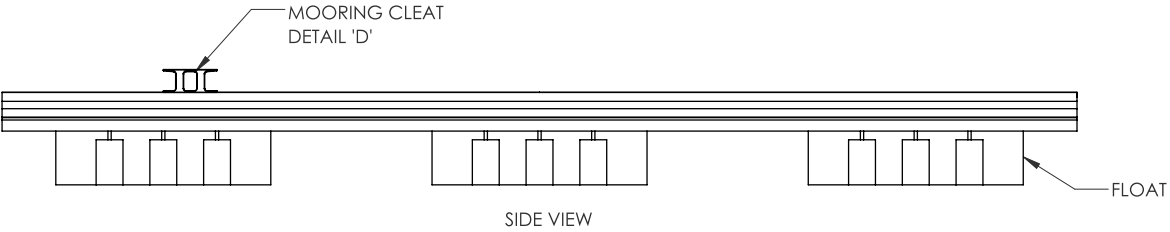
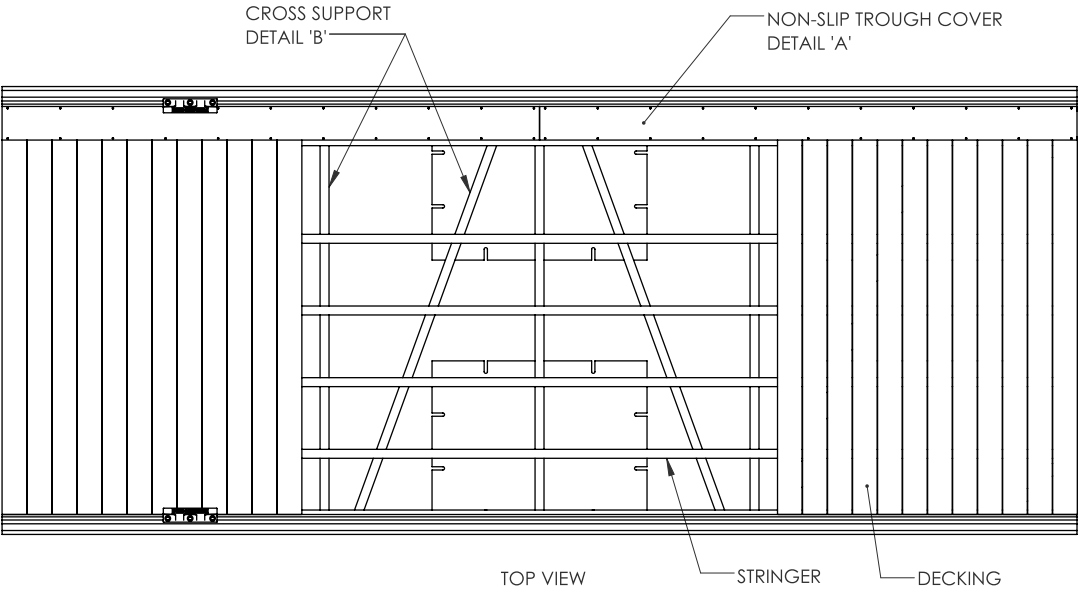
36
Fuel Docks

37
Fixed Docks

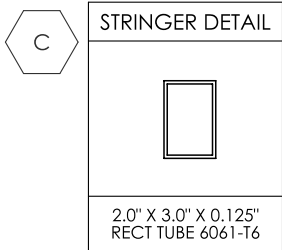
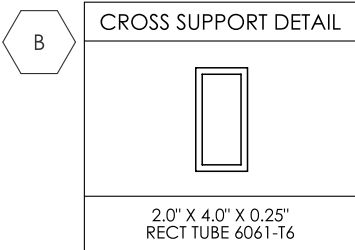
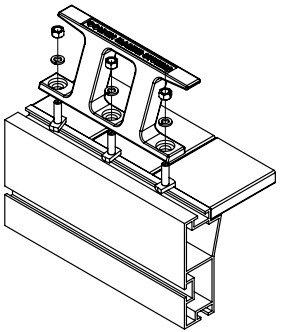
SERIES 850

SINGLE TRACK PROFILE

TYPICAL OVERVIEW



TYPICAL DOCK TO DOCK CONNECTION



D

AVAILABLE CLEATS

CAST ALUMINUM

SIZES	
12" GMS	
16" GMS	
18" GMS	
20" GMS	
10" S-CLEAT	
12" S-CLEAT	

SERIES 850

COMPOSITE/PVC DECKING



Snook Bight Marina

Transforming Snook Bight Marina After Hurricane Ian

Welcome to the newly restored Snook Bight Marina, a Suntex property, proudly rebuilt by Golden Marine Systems after the devastating impact of Hurricane Ian. Our state-of-the-art Golden Marine Systems floating aluminum dock array now stands as the centerpiece of this world-class marina. Following the obliterating force of Hurricane Ian, which left Snook Bight Marina in ruins, Golden Marine Systems stepped in to rebuild and restore this iconic waterfront destination. The storm's fury tore away all the marina's wet slips, fuel dock, and piles, leaving behind a trail of destruction. With 8 feet of water flooding the marina office, store, and storage barn, the damage was extensive, including the loss of company forklifts. Undeterred by the challenges, Golden Marine Systems swiftly initiated the fabrication of replacement dock sections at Golden Manufacturing's ISO 9001:2015-certified Fort Myers production facility. Utilizing premium marine-grade 6061-T6 aluminum, our Golden 850 Series Aluminum Dock sections were meticulously crafted to withstand the rigors of marine environments. Equipped with integrated E-Tracks, our docks offer versatility, allowing 12" cleats to slide fore and aft to accommodate individual vessels. The array at Snook Bight Marina features a 240' center walkway flanked by two 8' W x 725' L cross sections, each adorned with 11 4' W finger piers. For added convenience and safety, all docks are covered in fade- and slip-resistant Endeck composite decking.

Nestled along the picturesque Estero Bay, Snook Bight Marina offers a full-service experience with 70 interior and linear slips, including a 160-boat dry-stack operation, rentals, sales and service. As a Suntex Boat Club member, you'll have access to award-winning waterfront restaurants and a host of amenities. For all your marina system needs, trust Golden Marine Systems. Contact us today at 239-337-4141 or visit us online at www.goldenmarinesystems.com to discover how we can elevate your waterfront experience. Let us help you embark on a new era of boating excellence at Snook Bight Marina!

SERIES 850

COMPOSITE/PVC DECKING



Pink Shell Marina

Rebuilding Pink Shell Marina with Golden Marine Systems

At Pink Shell Marina in Fort Myers Beach, Florida, a vision of excellence was brought to life with the help of Golden Marine Systems. Our team collaborated closely with the marina owners to implement a comprehensive solution that would elevate their facility to new heights of functionality and aesthetics after the destruction of Hurricane Ian. The chosen solution? Golden Marine Systems' acclaimed 850 Series Single Track system, paired with Endeck Ashwood PVC decking for durability and visual appeal. This combination not only provided exceptional performance but also enhanced the overall aesthetic allure of Pink Shell Marina. One of the standout features at Pink Shell Marina is its adjustable cleats, pile guides, and utility troughs. These features were strategically integrated to streamline operations and ensure efficient docking for boaters. Additionally, our gangways provide safe and convenient access to boats, enhancing the overall boating experience for marina visitors.

The successful completion of the Pink Shell Marina project is a testament to Golden Marine Systems' commitment to excellence and customer satisfaction. Our team's expertise, combined with our premium marine system solutions, has helped Pink Shell Marina establish itself as a premier destination for boaters in Fort Myers Beach, once again. As we celebrate the achievement of the Pink Shell Marina project, we invite you to explore how Golden Marine Systems can elevate your marina to new heights. Contact us today to learn more about our innovative solutions and start your journey towards a more functional and aesthetically pleasing marina experience. Together, let's make your marina the envy of the coast!



National Park Service, Key Largo



Safe Harbor Boy's Home, Jacksonville



MarineMax Pensacola



Sanibel Yacht Harbor

MarineMax Pensacola 'B' Dock: A Showcase of Excellence in Marine Infrastructure

Golden Marine Systems recently completed construction on the 'B' dock project for MarineMax Pensacola, showcasing our commitment to excellence in marine infrastructure. Spanning an impressive 358 feet, this dock offers side-to-tie functionality and features 19 slips capable of accommodating vessels up to 70 feet in length. Key components of the project include our state-of-the-art 850 Series single track system, Endeck PVC decking for enduring durability, and 12" GMS adjustable cleats ensuring secure mooring. With meticulous attention to detail and seamless execution, the 'B' dock project exemplifies our dedication to delivering superior marine solutions.

Our services provided are as follows: Design and Engineering, Construction and Installation, Quality Assurance and Compliance, Project Management. The general contractor on this amazing project is GCG Construction and the installation management is Mid-Coast Marine. At Golden Marine Systems, we strive to exceed expectations with every project we undertake. Contact us today to discuss how we can transform your waterfront property with our innovative marine solutions.

SERIES 850

COMPOSITE/PVC DECKING

Enhancing Marine Infrastructure: Upgrading Lovers Key State Park with Golden Marine Systems

Replacing the boat ramp at the Lovers Key National State Park with Golden's 850 Series floating dock system sounds like a smart move, especially considering its resilience during Hurricane IAN. It's crucial to prioritize structures that can withstand natural disasters in coastal areas prone to hurricanes. The choice of Endeck Gray PVC decking for the dock is also noteworthy for its durability and resistance to harsh weather conditions.

With Golden's 12" adjustable cleats and pile guides, the dock system offers stability and convenience for boaters. The addition of three 4' wide x 30' gangways further enhances accessibility and ease of use for visitors. Overall, this upgrade seems like a reliable and practical solution for Lovers Key State Park's marine infrastructure needs.



Lovers Key State Park



MarineMax Brick, New Jersey



Baypoint Marina, Panama City, Florida



Sailfish Marina, Stuart, Florida



Sarasota Sailing Squadron



Nervous Nellie's, Fort Myers Beach, Florida

Enhancing Sarasota Sailing Squadron with State-of-the-Art Floating Docks

In conjunction with Golden's Sarasota County dealer, Golden Marine Systems was chosen to supply the floating docks for the Sarasota Sailing Squadron. This club has a rich history, beginning in the late 1930s when a group of teenagers formed a "down to earth" sailing club at the City Pier, the location now known as Marina Jack. The club disbanded in 1942 during World War II, but upon returning home, the former members reconstituted the club and named it the Sarasota Sailing Squadron.

The project involves the installation of 2,300 square feet of dock serving the youth sailing program, the house dock, and the staging dock. Golden Marine Systems utilized their 850 Series single track system for this endeavor, outfitting it with Trex decking to match the existing decking of the facility. The 850 Series system offers adjustable cleats, pile guides, and finger piers, providing versatility and functionality to meet the diverse needs of the club.



Salty Sam's, Fort Myers Beach, Florida



City of Bradenton Beach

SERIES 850

NATURAL HARDWOOD



Bayview Marina

Enhancing Waterfront Excellence at the Bayview Marina

Welcome to the 2023 Boater's Choice award winner, Bayview Marina, where Golden Marine Systems has redefined the standard of waterfront excellence. Our project at Bayview Marina in Barnegat Bay, NJ, showcases the seamless integration of our cutting-edge 850 Series Single Track system and luxurious Cumaru Hardwood Decking. As a premier destination for boating connoisseurs, Bayview Marina required a docking solution that not only offered functionality but also exuded elegance and durability. Golden Marine Systems rose to the challenge, delivering a tailored solution that exceeded expectations. Our 850 Series Single Track system, renowned for its reliability and precision engineering, ensures smooth docking experiences for boaters of all kinds. Paired with Cumaru Hardwood Decking, our docks at Bayview Marina offer a timeless backdrop for marine adventures, setting a new standard for waterfront luxury.

Featuring adjustable cleats, pile guides, utility troughs, and gangways, Bayview Marina now offers unparalleled convenience and functionality. Every detail has been meticulously crafted to enhance the boating experience and elevate the overall atmosphere of the marina. Discover the perfect blend of luxury and practicality at Bayview Marina, where Golden Marine Systems has transformed boating into an unforgettable experience. Contact us today to learn more about our innovative solutions and embark on your journey toward waterfront excellence with Golden Marine Systems.

Gulf Star Marina's Transformation and Role in Crisis Response

Gulf Star Marina's transformation in Fort Myers, Florida, is truly impressive! The upgrade from an antiquated dry storage building to a state-of-the-art automated facility, coupled with the installation of modern aluminum floating docks, signifies a significant leap forward in both functionality and aesthetics. Golden Marine Systems' contribution in phase one, crafting the 2,420-square-foot docks and two 5 feet by 36 feet gangways, demonstrates a commitment to quality and innovation. Their use of the 850 Series single track system with Cumaru natural hardwood, along with features like 12" GMS adjustable cleats, pile guides, and finger piers, ensures durability and efficiency. The incorporation of a customer service trough beneath the Cumaru natural wood decking, designed to accommodate lines for a future high-speed fuel system, highlights Gulf Star Marina's forward-thinking approach. It reflects a dedication to enhancing customer experience and preparing for future advancements in marine technology. The timely delivery of the docks by Golden Marine Systems and their seamless installation by The Kelly Brothers signify effective project management and collaboration. This level of efficiency is crucial in minimizing disruptions and maximizing the marina's operational capabilities. Looking ahead, phase two of the project promises even more enhancements, with an additional 5,750 square feet of aluminum floating docks awaiting approval from the U.S. Army Corps of Engineers. These expanded dock sections, equipped with a fuel pump and additional staging areas, will not only accommodate transient boaters but also cater to visitors patronizing the renowned Doc Ford's restaurant at the marina. This integration of amenities underscores Gulf Star Marina's commitment to providing a comprehensive and inviting experience for both boaters and guests.

Overall, Gulf Star Marina's redevelopment showcases a harmonious blend of innovation, functionality, and customer-centric design, positioning it as a premier destination for boaters and waterfront enthusiasts alike. In addition, Golden Marine Systems docks systems resilience in the face of Hurricane Ian underscores its importance as a critical infrastructure asset in times of crisis. The fact that Gulf Star's docks were able to withstand the impact of the hurricane and quickly pivot to support FEMA's search and rescue efforts demonstrates its strategic location and operational readiness. By providing a base for FEMA's search and rescue missions on the outer islands, including Sanibel, Gulf Star Marina played a crucial role in facilitating timely and effective response efforts. Its accessibility and infrastructure likely enabled swift deployment of resources and personnel to areas in need, contributing significantly to the overall disaster response and recovery efforts. This experience highlights the multifaceted role that marinas and waterfront facilities can play during emergencies, serving not only as safe harbors for boats but also as hubs for coordination, support, and rescue operations. Because of Golden Marine's resilient dock system, Gulf Star Marina's ability to serve as a staging area for FEMA showcases its versatility and importance within the community, reinforcing its status as a vital asset in times of crisis.



Gulf Star Marina

SERIES 850

NATURAL HARDWOOD



Waterfront Park at Lake Minneola

The Story of Clermont, Florida's Revamped Marina

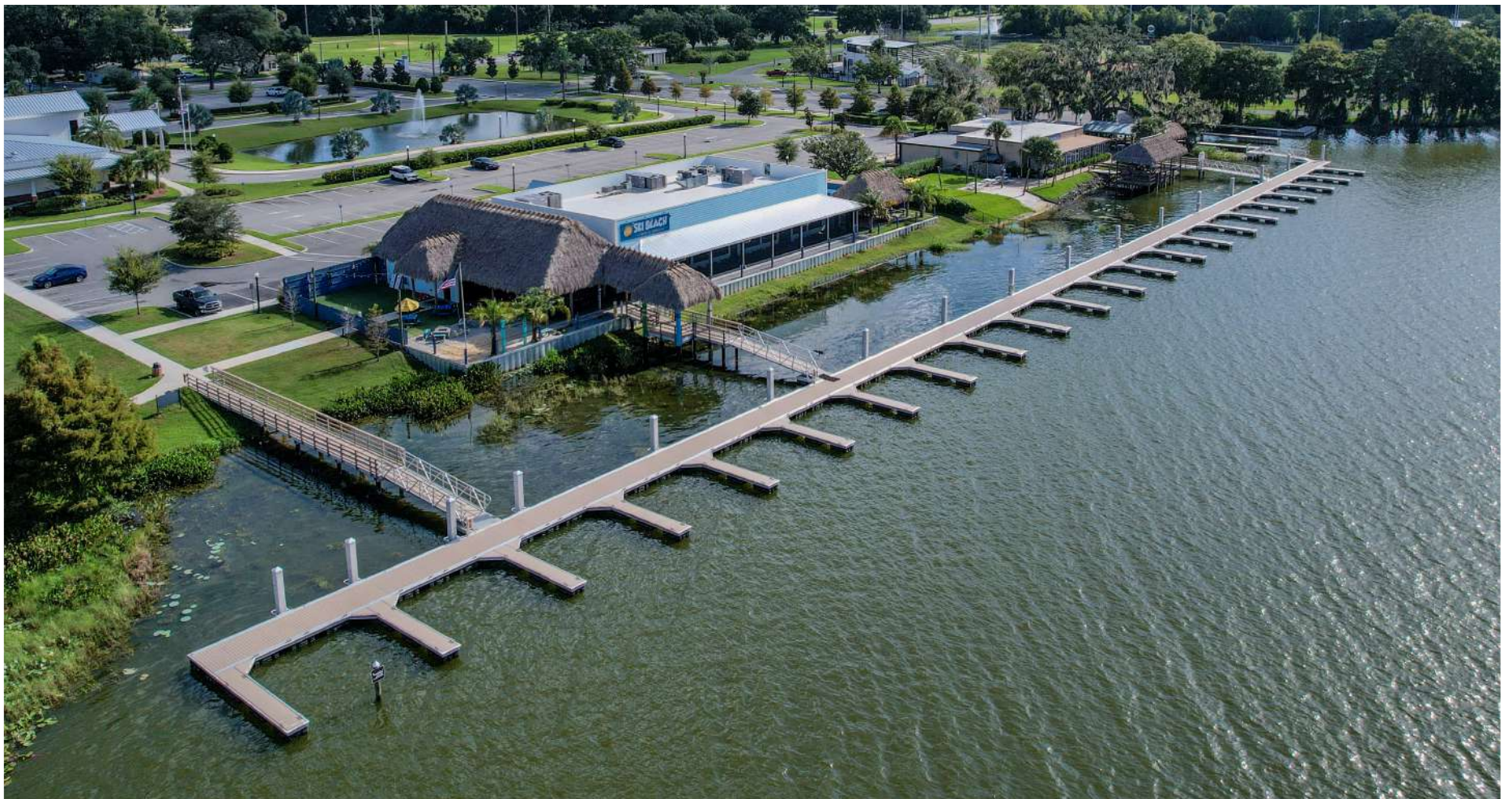
The City of Clermont, Florida, celebrated the opening of its new 10-slip dock with a ribbon-cutting ceremony on January 10, 2020, aiming to overcome the limitations of its previous dock that struggled to accommodate the high demand from daily boaters and contend with the site's challenging wind and wave conditions. Traverse Group, serving as the project's general contractor, partnered with Golden Marine Systems, LLC for the dock construction. Golden Marine supplied 2020 square feet of floating docks for the marina and 830 square feet for the boat ramp, all equipped with Cumaru decking and adjustable cleats. Additionally, three ADA-compliant gangways were installed, ensuring accessibility for all users. Golden Marine utilized their 850 Series single track system with Cumaru natural hardwood decking, complemented by 12" GMS adjustable cleats, pile guides, and finger piers. Importantly, the docks were engineered to withstand the harsh site conditions, including wind and waves.

Alex Shafer, vice president of operations at Traverse Group, highlighted significant deviations from the original design necessitated by challenges posed by lake fluctuations and elevations. Initially planned as conventional docks with gangways leading to concrete floating docks, adjustments were crucial to ensure usability under varying water levels. Mike Shanley from Golden Marine proposed an innovative solution using their extruded aluminum system, which effectively addressed the challenges encountered during the project.

Golden Marine Systems Enhances Venetian Gardens: A Triumph in Waterfront Revitalization

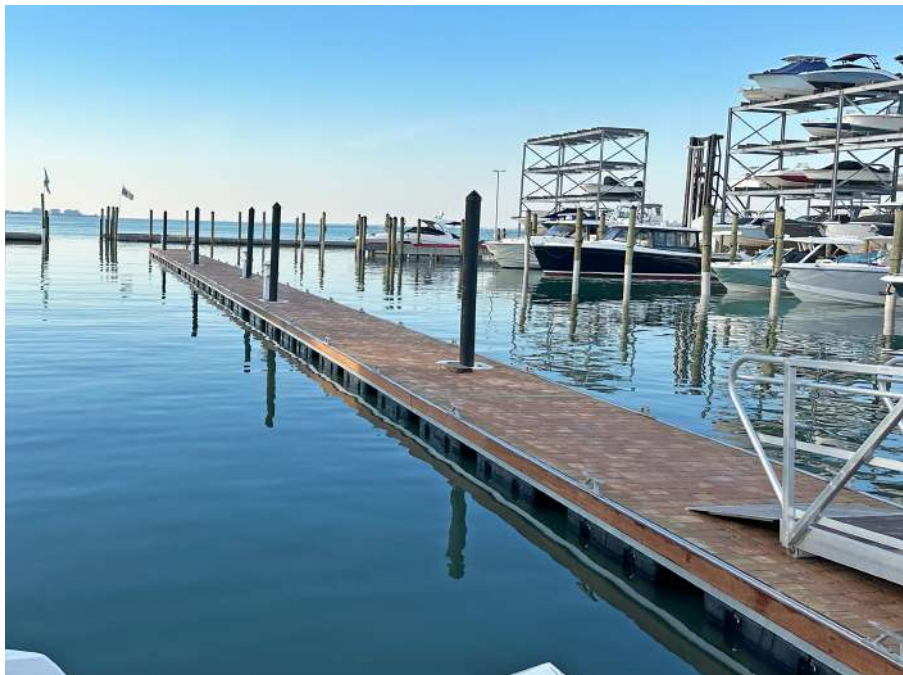
Golden Marine Systems played a pivotal role in the ambitious waterfront revitalization project undertaken by The City of Leesburg, Florida. The project, situated on the serene Venetian Gardens along Lake Harris, aimed to expand public boating access and enhance recreational opportunities for residents and visitors alike. Golden Marine Systems provided a combination of fixed and floating docks, each meticulously crafted to offer durability, functionality, and aesthetic appeal. For the fixed dock component, Golden supplied 980 square feet of its 9 Series Aluminum Dock System, which included safety handrails. This system, designed for wider piling spacing compared to traditional wooden structures, not only offered cost savings to the city but also enhanced the visual appeal from both the shore and the water. Manufactured to stringent ISO 9001:2015 standards using marine-grade aluminum and stainless steel fittings, these docks boast a remarkable lifespan of over 35 years, backed by a 10-year limited warranty. Complementing the fixed docks, Golden's 850 Series Aluminum Dock System was employed for the floating dock section. Known for its stability and premium build quality, this system featured adjustable pile guides, cleats, main docks, finger piers with power pedestals, water service, and a fire suppression solution.

The installation of these docks, carried out by Kelly Brothers, Inc. of Fort Myers, Florida, was met with praise from John Folker, the project manager for the City of Leesburg. He highlighted the importance of the revitalized waterfront in accommodating various events, including bass fishing tournaments, and connecting to popular destinations within Lake Harris and its surrounding lakes. Supported by grant funding from Lake County and the Florida Fish and Wildlife Conservation Commission, the Venetian Gardens renewal project encompasses not only the docks but also features such as the Ski Beach Grill & Bar, extensive landscaping, walking trails, and access to nearby event venues like Rogers Park and Pat Thomas Stadium. Overall, the project stands as a testament to the collaborative efforts aimed at enhancing community spaces and promoting recreational activities in the region.



Venetian Cove Marina, Leesburg

SERIES 850 PAVERS



MarineMax Sarasota



MarineMax Fort Myers

Engineering Excellence in the Redevelopment of MarineMax Sarasota Basin

Golden Marine Systems rose to the challenge presented by the redevelopment and design of the MarineMax Sarasota basin. The constraint of a narrow 42" wide staging dock could have posed stability issues, but their innovative solution, the dock stabilizer, demonstrates their commitment to problem-solving and ingenuity. Winning the 2021 NMMA Innovation Award for this device further underscores its effectiveness and uniqueness in the industry. The marina redevelopment consisted of two staging docks totaling 2650 square feet and 15 fixed docks for a total of 360 square feet. The integration of Golden's 850 Series aluminum system with IPE fascia and urethane fenders ensures durability and reliability, crucial for withstanding the demands of a busy marine environment.

The choice of brick paver decking not only adds to the aesthetics but also maintains consistency with MarineMax's signature look. The inclusion of 12" GMS adjustable cleats and pile guides enhances functionality and usability for users of the dock. Overall, it's clear that Golden Marine Systems provided a comprehensive solution tailored to the specific challenges of the MarineMax Sarasota basin project, showcasing their expertise and dedication to excellence in marine engineering and design.

Supplier for MarineMax Clearwater Dock Replacement Project

Golden Marine Systems was chosen as the dock supplier for the 2350 square foot MarineMax Clearwater dock replacement project. Located on the west shore of Tampa Bay, MarineMax Clearwater has proudly served the area for 30+ years. Golden utilized their 850 Series aluminum system with IPE fascia and a heavy-duty D-Fender to ensure durability and longevity, crucial for withstanding the conditions of Tampa Bay. The incorporation of brick paver decking adds a touch of elegance and aligns with MarineMax's signature aesthetic, contributing to the overall appeal of the project.

The inclusion of 12" GMS adjustable cleats and pile guides enhances functionality and ease of use for boaters utilizing the dock. Additionally, the decision to use IPE decking for the Golden gangways ensures consistency in materials and maintains a high-quality finish throughout the project.



MarineMax Clearwater



MarineMax Houston

Golden Marine Systems Significantly Enhances MarineMax Houston

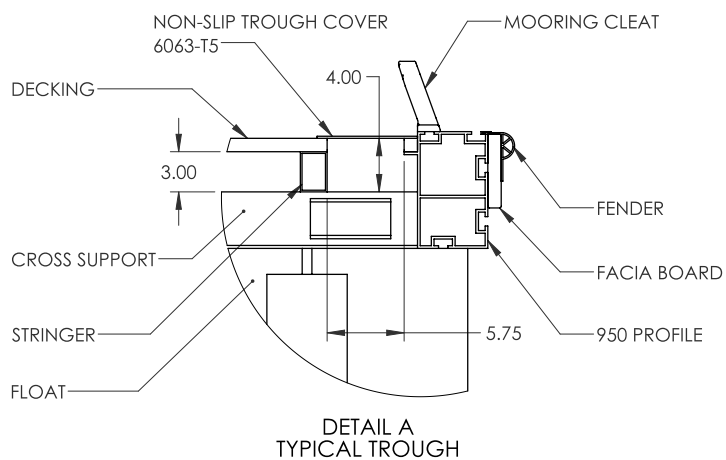
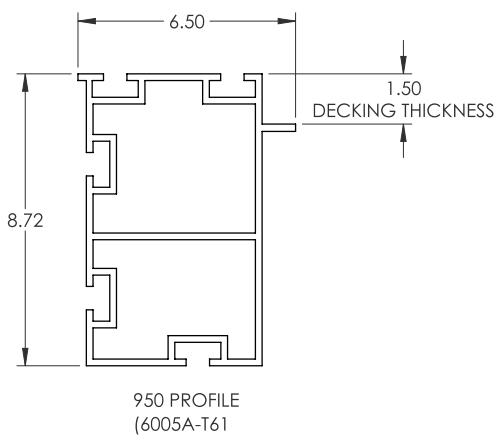
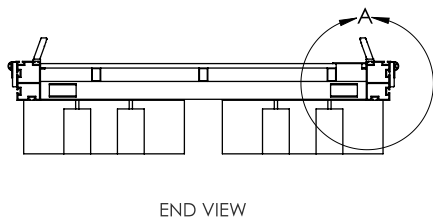
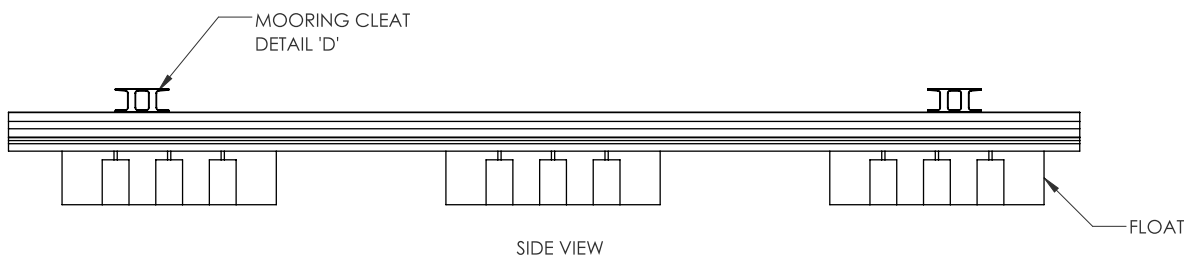
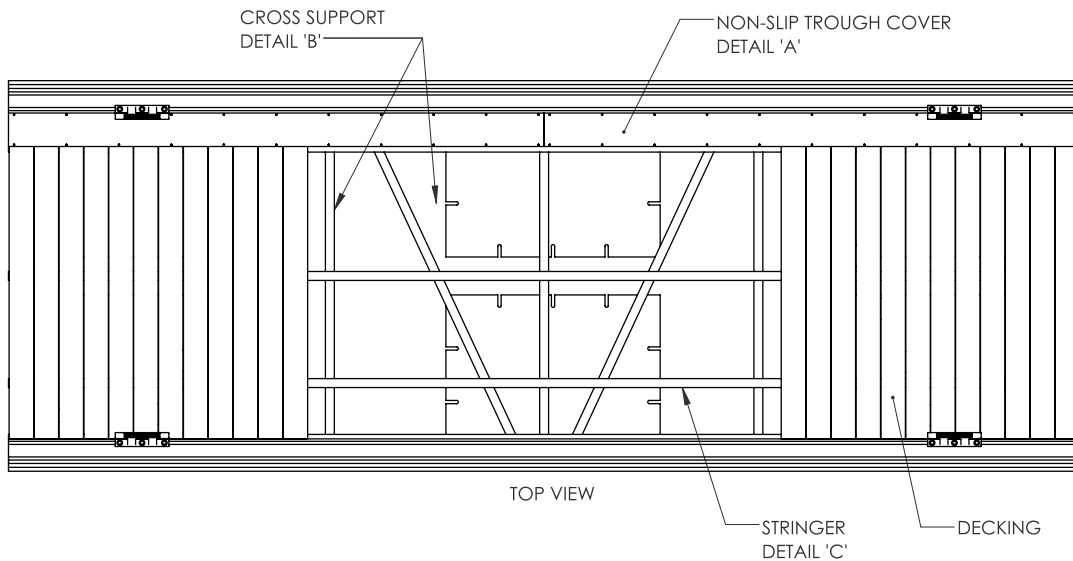
The addition of two 10' wide x 100' long floating docks from Golden Marine Systems seems like a significant enhancement to MarineMax Houston's dry storage drop zone and staging area. The choice of Golden's 850 Series System with adjustable cleats indicates a focus on versatility and convenience, allowing for easy mooring and adjustment according to different boat sizes and configurations. The use of brick pavers for decking provides durability and a classic aesthetic, while the natural hardwood IPE fascia adds a touch of elegance to the docks. This combination of materials not only ensures longevity but also enhances the overall visual appeal of the area. Additionally, the inclusion of two 4' wide x 25' long gangways provides safe and easy access to the docks, further enhancing the functionality and accessibility of the dry storage drop zone and staging area.

MarineMax Houston, with over 30 years of experience, have perfected their services to cater to the needs of their customers. The range of amenities they offer, from top-notch boat storage to maintenance and service options, indicates a commitment to ensuring customers have a seamless boating experience. Their indoor dry storage with 375 racks for boats up to 40 feet is impressive, providing protection from the elements and convenience for boat owners. And for those with larger vessels, the availability of wet slips accommodating boats up to 100 feet, along with high-speed fueling options and a pump-out station, ensures that even larger boats are well taken care of.

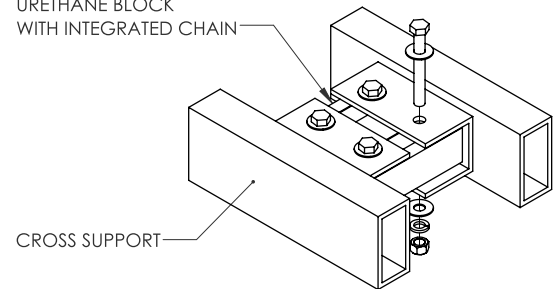
SERIES 950

DOUBLE TRACK PROFILE

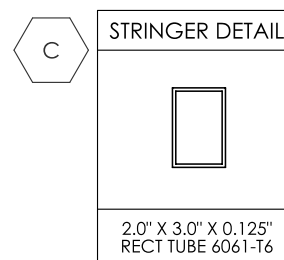
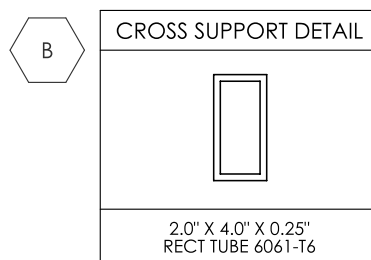
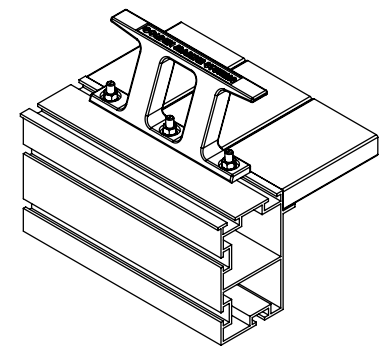
TYPICAL OVERVIEW



70 DUROMETER URETHANE BLOCK WITH INTEGRATED CHAIN



TYPICAL DOCK TO DOCK CONNECTION



D

AVAILABLE CLEATS

SIZES	
CAST ALUMINUM	12" GMS
	16" GMS
	18" GMS
	20" GMS
	10" S-CLEAT
	12" S-CLEAT

SERIES 950 COMPOSITE/PVC DECKING



Moss Marine

Unveiling the All-New Moss Marine

Welcome to Moss Marine in Fort Myers Beach, where Golden Marine Systems has partnered to elevate the marina experience to new heights. Our premium 950 Series Double Track Main docks and 850 Series Single Track Finger Piers now grace the waterfront, offering unrivaled performance and appearance. Crafted with precision engineering and durable materials, including Timbertech Cedar Composite decking, our docks at Moss Marine combine reliability with timeless beauty. Equipped with essential features like adjustable cleats, pile guides, utility troughs and gangways, our Golden Marine Systems ensure smooth operations and enhanced user experience for all marina visitors.

Experience the pinnacle of marina luxury with Golden Marine Systems. Contact us today to learn more about our innovative solutions and embark on a journey towards elevated boating experiences in Fort Myers Beach. Let us help you make every moment on the water truly memorable by keeping your boat safe with our innovative infrastructure.

SERIES 950

COMPOSITE/PVC DECKING



Mystic Pointe Marina

Elevate Your Marina Experience at Mystic Pointe

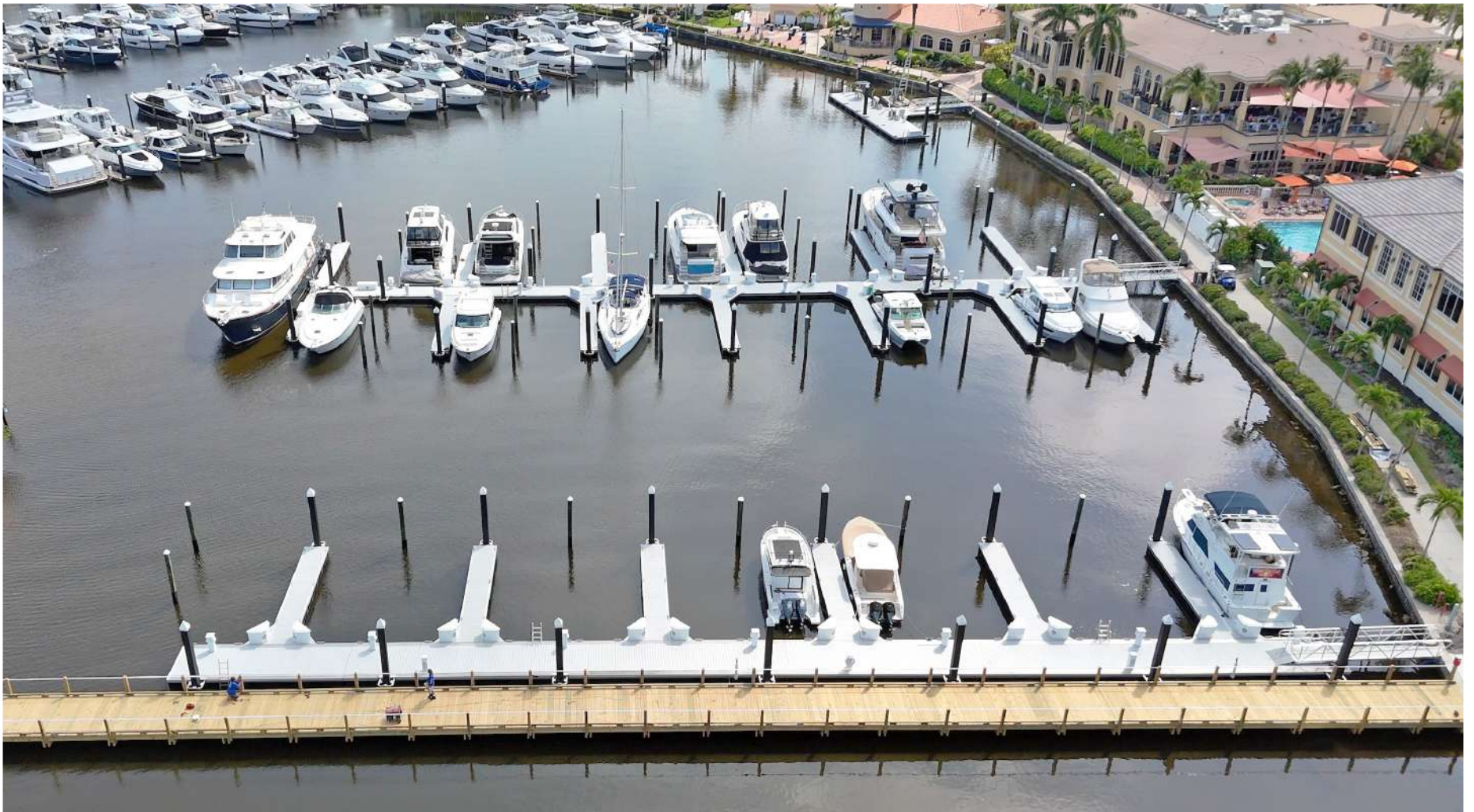
Introducing the all-new Mystic Pointe Marina in Aventura, Florida, proudly outfitted with Golden Marine Systems' cutting-edge infrastructure. Mystic Pointe Marina showcases the unparalleled performance and aesthetics of our 950 Series Double Track Main docks and 850 Series Single Track Finger Piers. Nestled in the heart of Aventura, Florida, Mystic Pointe Marina stands as a beacon of luxury and sophistication, now enhanced with our state-of-the-art Golden Marine Systems. Our 950 Series Double Track Main docks and 850 Series Single Track Finger Piers provide unparalleled stability, durability, and versatility, ensuring a seamless boating experience for all.

Crafted with precision engineering and premium materials, including Endeck Slate PVC decking, our docks exude elegance while withstanding the harshest marine conditions. Featuring adjustable cleats, pile guides, utility troughs, and gangways, our Golden Marine Systems are designed to streamline operations and enhance user experience, setting a new standard for marina excellence. Experience the pinnacle of marina luxury with Golden Marine Systems. Contact us today to learn more about our innovative solutions and embark on a journey towards elevated boating experiences. Let us help you make waves in Aventura, Florida, with Golden Marine Systems.

Golden Marine Systems Restores Gulf Harbour Yacht Club in Record Time

Golden Marine Systems emerges as the beacon of hope in the aftermath of Hurricane Ian, swiftly restoring the Gulf Harbour Yacht and Country Club to its former glory. Witness the remarkable feat of completing phase one of this monumental project in just 18 months, boasting an impressive array of 101 slips capable of hosting boats up to 80 feet in length. Golden Marine Systems, in collaboration with MidCoast Marine, spared no effort in employing top-of-the-line solutions. The 950 Series double track for main sections and 850 Series for finger piers ensured unparalleled durability and functionality. Meticulously integrated sixteen-inch GMS adjustable cleats, adorned with the Gulf Harbour logo, alongside adjustable pile guides and finger piers, provided the finishing touches.

To ensure utmost convenience, custom utility troughs with removable panels were seamlessly integrated, facilitating easy access to utilities. Endeck Ashwood decking and fascia, complemented by heavy-duty D-Fenders for enhanced protection, further underscored the commitment to quality. During the ribbon-cutting ceremony, Dana Snyder of the Gulf Harbour Marina Association lauded the engineering prowess of Golden Marine Systems, emphasizing the speed and efficiency with which the project was executed.



Gulf Harbour Yacht & Country Club

SERIES 950

COMPOSITE/PVC DECKING

Durable Dock Construction at Salt Shack on the Bay in St. Petersburg, FL: Golden Boat Lifts' 950 Series with Endeck Composite

Salt Shack on the Bay in St. Petersburg, Florida, is a beachy restaurant featuring a rustic-refined atmosphere. For the construction of its docks, which are exposed to the challenging conditions of an open bay, Golden utilized their 950 Series Double Track System known for its heavy-duty capabilities, this system is ideal for handling the harsh conditions of an open bay environment, ensuring durability and stability. Endeck Composite was utilized for the decking and fascia, a material renowned for its durability and low maintenance, providing a long-lasting and visually appealing surface. A heavy-duty fender was installed to protect the docks from impact damage, the heavy-duty fender is essential for withstanding the forces exerted by waves and boats.

Heavy duty pile guides were supplied to ensure the dock remains securely in place, allowing for vertical movement with the tides while maintaining stability. GMS 12" Aluminum Adjustable Cleats were provided and are crucial for securing boats, offering flexibility and robustness. Finally, an ADA-compliant gangway was installed, also decked with matching Endeck Composite to maintain a consistent look throughout the dock. The combination of these materials and systems ensures that Salt Shack's docking facilities are not only aesthetically pleasing but also highly functional and resilient against the elements.



Salt Shack on the Bay



Charles Deering Park

SERIES 950

NATURAL HARDWOOD



The Wharf Hotel and Marina

Redefining Seychelles' Waterfront

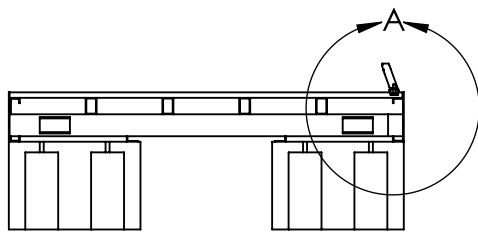
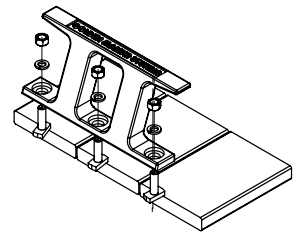
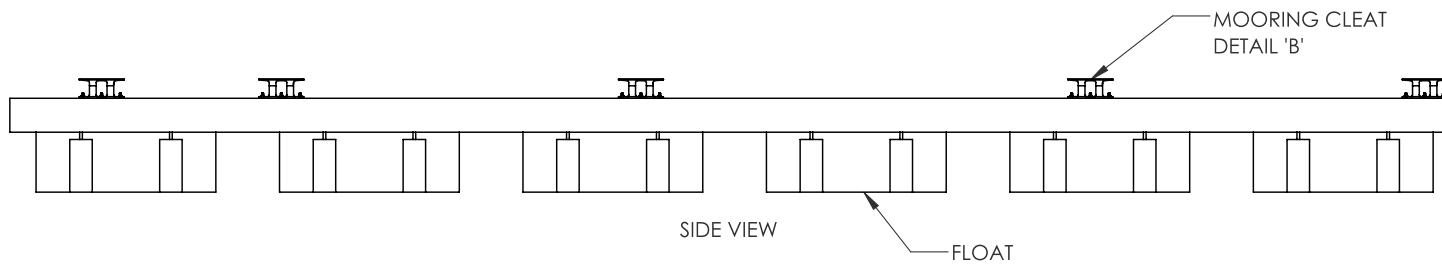
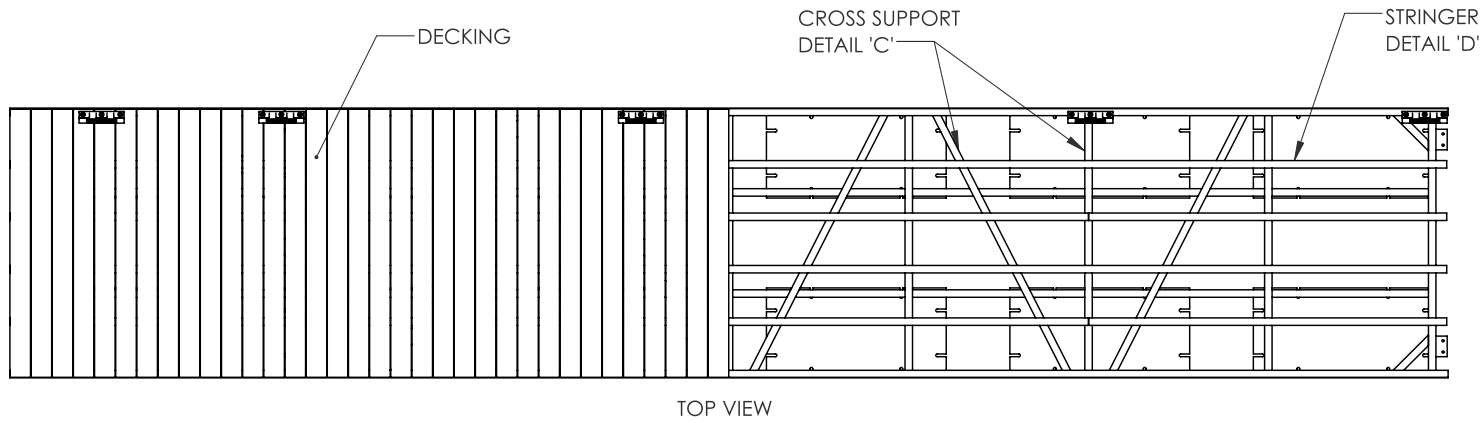
The Wharf Hotel & Marina, nestled in the majestic setting of Roche Caiman, Victoria, Seychelles, is poised for an extraordinary transformation. Collaborating with Golden Marine Systems, the marina embarked on a grandiose project to elevate the essence of Seychelles' waterfront oasis. At Golden Marine Systems, our vision extends beyond mere construction; it's about crafting an unique experience for boaters and visitors alike. From the manufacturing of aluminum floating docks to comprehensive turnkey project management, every facet of our endeavor is imbued with meticulous attention to detail.

At the heart of our project lies the creation of a 950 Double Track System, incorporating Balau Natural Hardwood sourced from Madagascar. With a focus on functionality and aesthetics, we aim to redefine excellence in marina living of this 50-slip project. Contact us today to learn more about how our innovative solutions can elevate your waterfront experience. Together, let's set new standards for coastal luxury and create memories that last a lifetime.

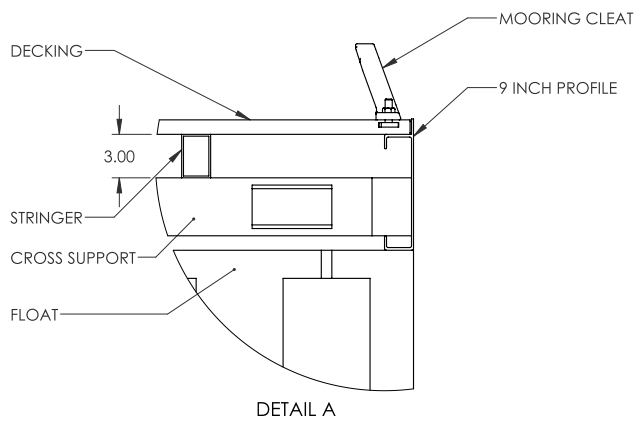


SERIES 9

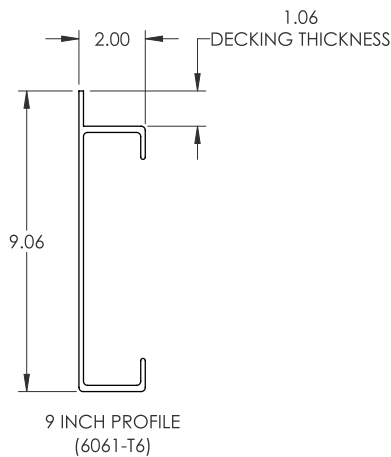
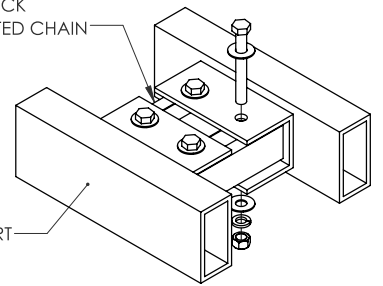
TYPICAL OVERVIEW



END VIEW



70 DUROMETER
URETHANE BLOCK
WITH INTEGRATED CHAIN



AVAILABLE CLEATS	
<p>CAST ALUMINUM</p>	SIZES
	12" GMS
	16" GMS
	18" GMS
	20" GMS
	10" S-CLEAT
12" S-CLEAT	



CROSS SUPPORT DETAIL
2.0" X 3.0" X 0.25" RECT TUBE 6061-T6



STRINGER DETAIL
2.0" X 3.0" X 0.125" RECT TUBE 6061-T6

SERIES 9 COMPOSITE/PVC DECKING



Harbor Cove

Crafting a New Standard in Waterfront Living

Welcome to Harbor Cove Community, where waterfront living meets magnificence. Situated at 499 Imperial Drive, North Port, FL 34287, this manufactured home community went through an extraordinary transformation with the help of Golden Marine Systems. At the heart of this luscious community lies a remarkable dock project spanning 3,230 square feet. This energetic undertaking seeks to reinvigorate the essence of waterfront living, offering residents and visitors alike an exceptional experience. Golden Marine Systems chose the esteemed 9 Series for the docks and complemented it by the sophisticated allure of gray Endeck Composite decking. This premium material not only exudes elegance but also promises dynamic durability and low maintenance, ensuring lasting beauty for years to come.

Equipped with 12" cleats and a gangway, our dock project is designed with convenience and functionality in mind. Whether you're docking your boat or simply enjoying a leisurely stroll along the waterfront, every detail has been meticulously crafted to enhance your experience. Contact us today to learn more about this exciting project and discover how you can be a part of our next extraordinary vision.

SERIES 9

COMPOSITE/PVC DECKING

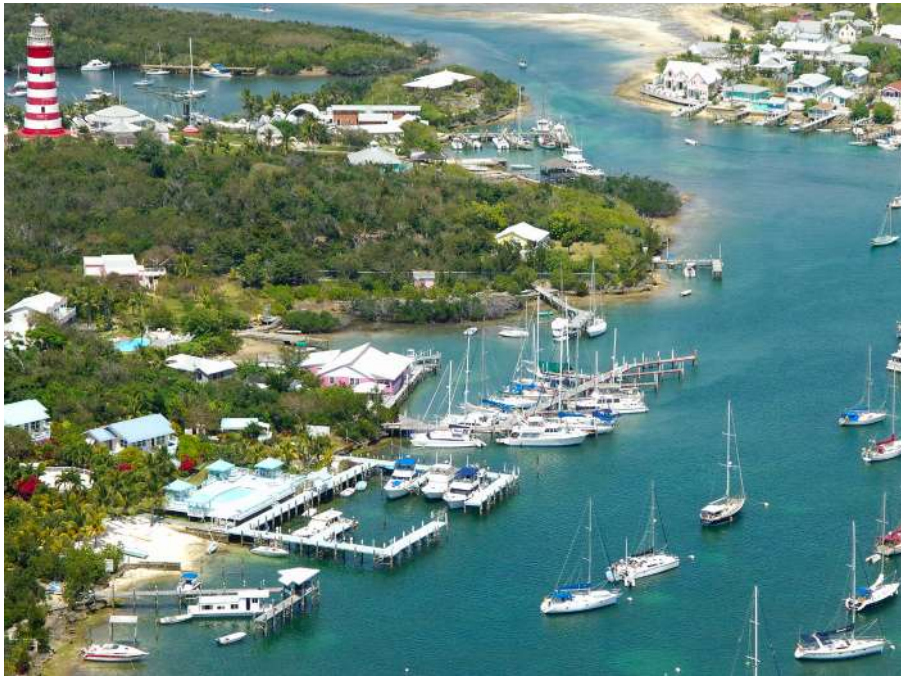


Anchorage Park

Unveiling the Community Dock Project

Step into a realm of waterfront tranquility at Anchorage Park, nestled in the serene landscape of North Palm Beach. Positioned within the scenic Village of North Palm Beach at 501 US Hwy 1, this quaint community unveiled a visionary project that could only be produced by Golden Marine Systems. Spanning an impressive 4,720 square feet and accommodating 20 slips, this community dock project epitomizes Anchorage Park's dedication to enhancing the waterfront experience. At its heart lies the renowned Dock 9 Series E-Track6061-T6 aluminum extrusion, paired with Endeck Composite Decking and fascia, ensuring both resilience and elegance.

With 12" cleats and gangways meticulously integrated, this community dock stands as a testament to thoughtful design, catering to the needs of boaters and waterfront enthusiasts alike. Whether you seek adventure on the waves or peaceful moments by the water's edge, Anchorage Park Marina beckons as a haven of tranquility and accessibility. Contact Golden Marine Systems today to see how we can take a drab, tired marina to a vibrant haven for all to marvel at.



Elbow Cay, Bahamas



Village of Wellington



Wild Blue



Mote Marine Sarasota

WildBlue Waterfront: Crafting Custom Docks for Estero's Premier Community

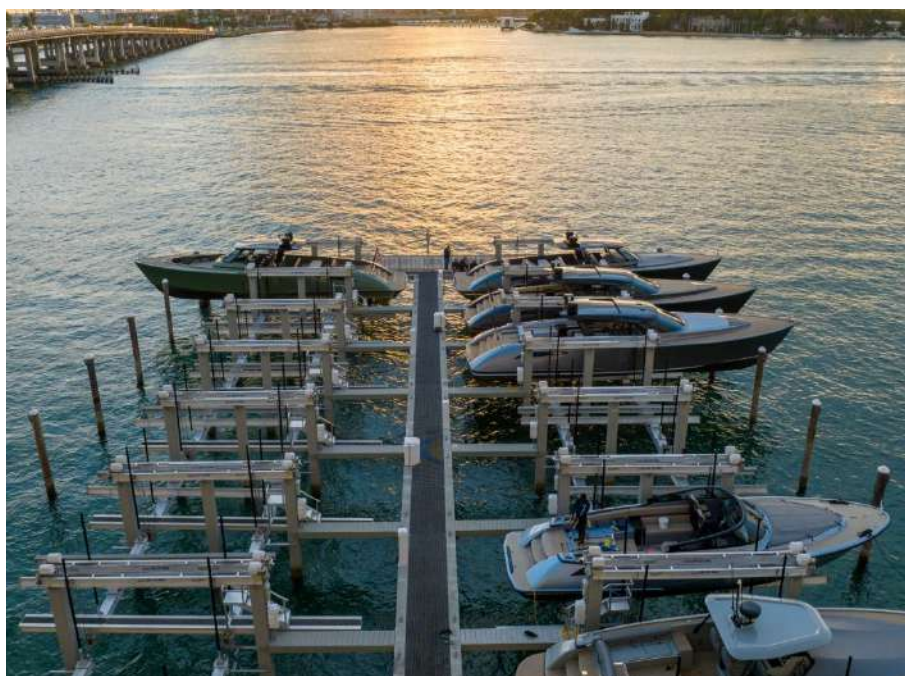
Golden's task was to construct a custom dock tailored to encircle the small basin within the Lennar Wild Blue Community in Estero, Florida. This community spans approximately 3,067 acres and features newly built single-family homes in Fort Myers, FL. Catering to water sports enthusiasts, the community offers an array of amenities including a resort-style swimming pool, a clubhouse with dining facilities, sport courts, and 800 acres of freshwater lakes. For this project, Golden Marine Systems opted to utilize its 9 Series dock system, expertly crafting it to form a seamless radius around the basin.

To ensure durability and longevity, heavy duty pile guides were used along with Weardeck composite decking, a sturdy material known for its resilience in marine environments. Phase one of the project encompassed the construction of a 4,200 square foot marina, which included two 4' wide x 30' gangways, further enhancing accessibility and functionality for residents and visitors alike.

BOAT LIFT MARINAS

Boat lifts in marinas are quickly becoming the latest trend, and Golden Boat Lifts & Marine Systems is leading the charge with innovative solutions that transform how marinas operate. Boaters love the convenience and protection boat lifts offer, keeping their vessels out of the water to prevent hull damage, reduce maintenance, and extend the life of their investment. For marina owners, lifts maximize dock space, improve operational efficiency, and attract premium clientele who value top-notch care for their boats.

Golden Boat Lifts & Marine Systems takes this trend a step further with durable, stylish designs built to handle vessels of all sizes. Their lifts are engineered with cutting-edge technology, ensuring reliability even in harsh marine environments. By choosing Golden Boat Lifts, marinas are not just keeping up with the latest craze—they're setting a new standard for excellence and customer satisfaction on the water.



Bentley Bay, Miami, FL



Brickell Place Marina, Miami, FL



Eagle Cay



Tampa



Winward Beach Marine

Excellence at Winward Beach Marine

Phase 1 of the Winward Beach Marine project represented another successful collaboration between Golden Marine Systems and Golden Boat Lifts. Golden Marine Systems utilized their renowned 9 Series dock system to construct the fixed dock components, providing stability and reliability. The dock was decked with Endeck Cedar decking and fascia, combining aesthetics with durability to enhance the overall appeal of the marina. Notably, the custom fixed finger piers, totaling 25 units, featured custom handrails and cutouts designed specifically to accommodate boatlift motors, further optimizing functionality. Concurrently, Golden Boat Lifts contributed 25 boat lifts ranging from 24K to 40K in capacity, addressing the varied needs of boat owners. These lifts were not only practical but also designed with a profile look to enhance the aesthetics of the basin, ensuring a harmonious blend with the surrounding environment.

Winward Beach Marine, located in the heart of Jacksonville Beach along the intracoastal waterway, boasts an impressive array of amenities including 300 dry storage slips and 200 wet slips, including 40 equipped with boat lifts. The popularity of the new boat lift slips quickly became evident as a waiting list began to accumulate even before construction was completed. Recognizing the demand, Winward Beach Marine swiftly moved forward with Phase 2, which entailed the addition of 28 more lifts, up to 56K capacities, and 3,000 square feet of fixed dock space, ensuring that they could accommodate the needs of their clientele while maintaining the marina's reputation for quality and service.

BOAT LIFT MARINAS



MarineMax Stuart

Enhancing Marine Infrastructure at MarineMax Stuart

Phase I of the MarineMax Stuart project marked a collaborative effort between Golden Marine Systems and Golden Boat Lifts. Golden Marine Systems deployed their 9 Series dock system for the fixed dock component of the project. The dock was surfaced with Endeck Ashwood decking and fascia, ensuring both aesthetic appeal and durability. Custom utility troughs with removable covers were also incorporated into the design, enhancing functionality and convenience for users. In tandem with the dock construction, Golden Boat Lifts provided a total of 50 boat lifts, ranging from 24k to 40k in capacity. This comprehensive solution catered to the diverse needs of boat owners, offering secure and reliable storage options for various vessel sizes. Demand for the boat lift slips was so high that phase II was added shortly after the completion of phase I.

This comprehensive solution catered to the diverse needs of boat owners, offering secure and reliable storage options for various vessel sizes. Demand for the boat lift slips was so high that phase II was added shortly after the completion of phase I. Situated on the picturesque St. Lucie River, MarineMax Stuart enjoys a prime location just minutes away from the Atlantic Ocean and some of Florida's most pristine beaches. Phase II of the project is poised to replicate the success of Phase I, with similar quantities and features, and is scheduled for completion in the fall of 2024.



Fairwinds Marina



Field Club Marina



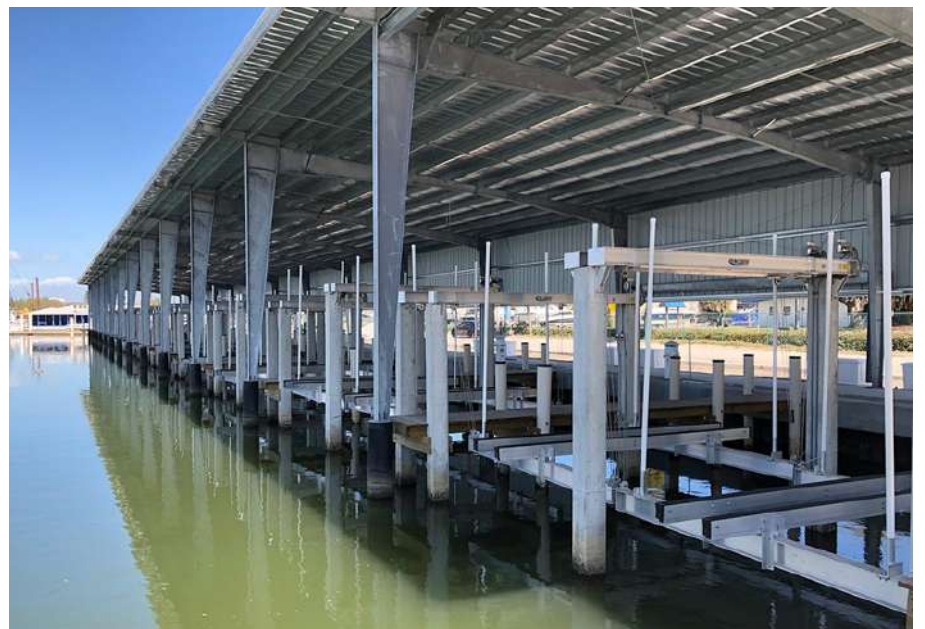
Flathead Lake Marina, Montana



Happy Landings, Key West



Lambs Yacht Center



Maximo Marina

BOAT LIFT MARINAS



Miami Beach Marina



Miami



Ocean City Marina



Marco Island Yacht Club



Peppertree Point



Puerto Del Rey



Tidewater Preserve



Miami River Cove



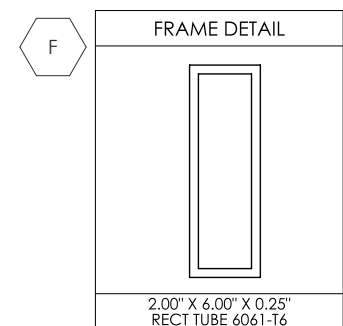
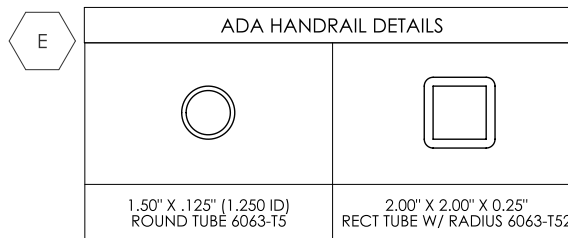
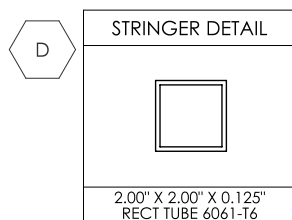
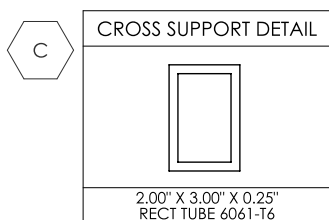
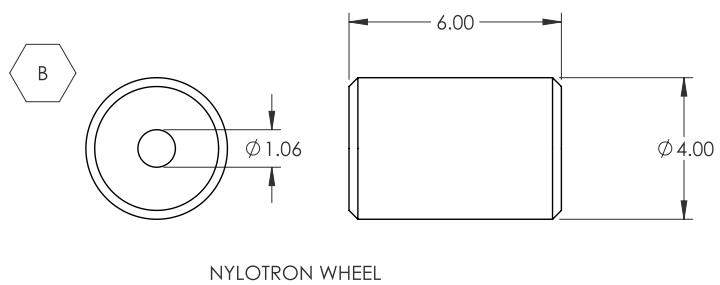
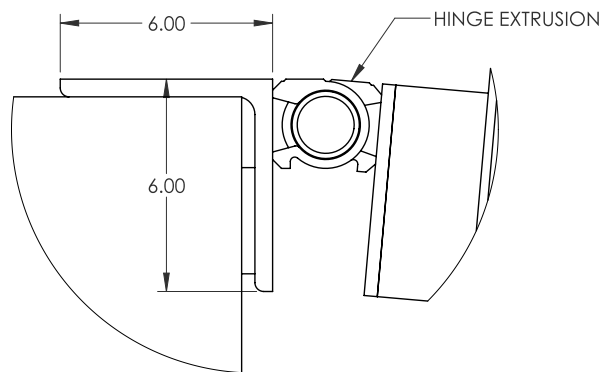
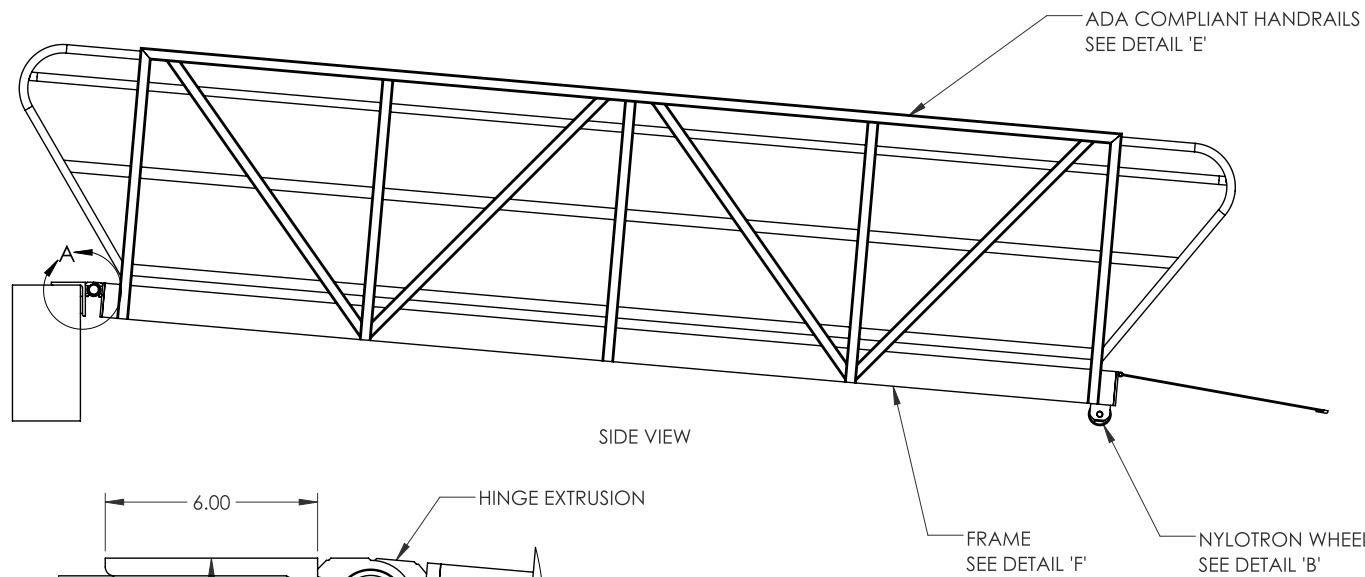
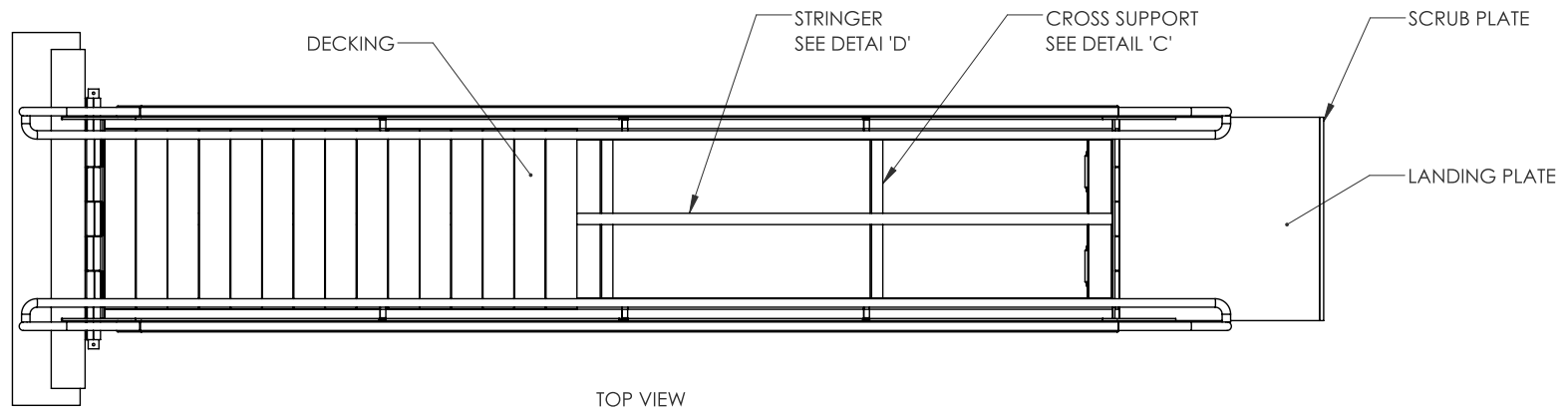
Tampa Bay Yacht Club



Venetian Bay

GANGWAYS

TYPICAL OVERVIEW



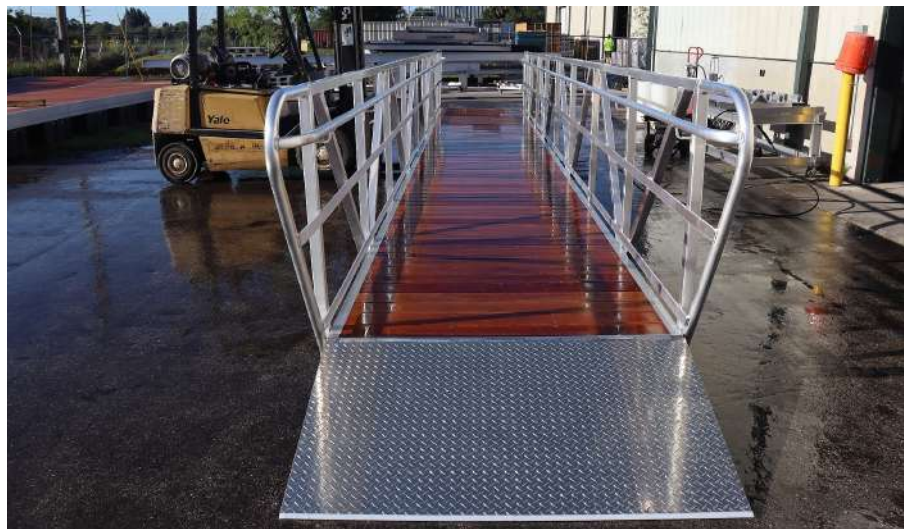


Gangways

We offer various types of decking from aluminum, composite, natural hardwood and polypro grated decking to mention a few. Our gangways are designed to be maintenance free, strong, versatile and safe. We offer both residential and commercial rated gangways that are ADA compliant and can be manufactured for golf cart accessibility.

Gangway Highlights:

- 6061-T6 Marine Grade Aluminum and 300 Series Stainless Steel
- Various types of decking
- Diamond plate transition plates
- Heavy-duty mounting plate
- Nylatron Roller assembly
- ADA compliant



GANGWAYS



Stuart



Salt Shack



Vista Blue



Gulf Star Marina



Snook Bight



Moss Marine



Anchorage Park



Residential Gangway



Residential Gangway



Lovers Key

FUEL DOCKS

Golden Boat Lifts & Marine Systems Floating Fuel Docks redefine convenience and reliability for marinas and waterfront facilities. Designed to adjust seamlessly with water levels, these docks ensure fuel accessibility in any tide or weather condition, enhancing safety and efficiency for boaters. Engineered with premium materials and cutting-edge technology, Golden's fuel docks are built to withstand harsh marine environments while maintaining a sleek, professional appearance. Their modular design allows for easy customization, making them adaptable to a wide range of marina layouts. What sets Golden apart is their unmatched commitment to durability, innovation, and customer satisfaction, ensuring their Floating Fuel Docks outperform and outlast the competition.



MarineMax Pensacola



Moss Marine



Gulf Harbour

FIXED DOCKS

Golden Boat Lifts & Marine Systems' fixed docks deliver unparalleled stability and long-term reliability for waterfront properties. Built with precision-engineered materials and designed to withstand extreme weather conditions, these docks are the perfect choice for marinas, residential waterfronts, and commercial applications. Their superior construction ensures minimal maintenance while offering a polished, professional appearance that elevates any waterfront setting. Golden's fixed docks are designed for longevity, using overengineered structures to meet the highest safety standards. With a reputation for exceptional quality and a commitment to customer satisfaction, Golden Boat Lifts & Marine Systems' fixed docks stand out as the top-tier choice in the industry.



MarineMax Stuart



Winward Beach Marine

DOCK STABILIZER

THE GAME-CHANGER

The patented Golden Dock Stabilizer was designed to eliminate wobbly and unstable floating docks. Floating docks that are too narrow, aging, or incorrectly designed can sometimes be unsafe and unstable. The Dock Stabilizer has been proven, once installed, to stabilize and level a floating dock greatly. Results on our first installation were way beyond our and our client's expectations. The Golden Dock Stabilizer is a game-changer and another innovative idea and product designed, patented, and manufactured by Golden.



Dock Stabilizer Highlights:

- Stabilizes floating docks and wave attenuators
- Minimizes heaving and tilting from wave action
- Pile diameter is not limited
- Multi-level pile guide with rollers spaced at dock level
- Adjustable to assist in leveling the dock



UHMW Rollers
Assembled with
300 Series
Stainless Steel
Hardware



Frame
Constructed
Using
6061-T6
Aluminum



Protective
Cowling
Constructed with
6061-T6
Aluminum

GOLDEN[®]

BOAT LIFTS & MARINE SYSTEMS

239.337.4141 ext. 239
sales@GoldenMarineSystems.com
www.GoldenMarineSystems.com
www.GoldenBoatLifts.com

